

SE889/CAN open - CODEC



Technical data:

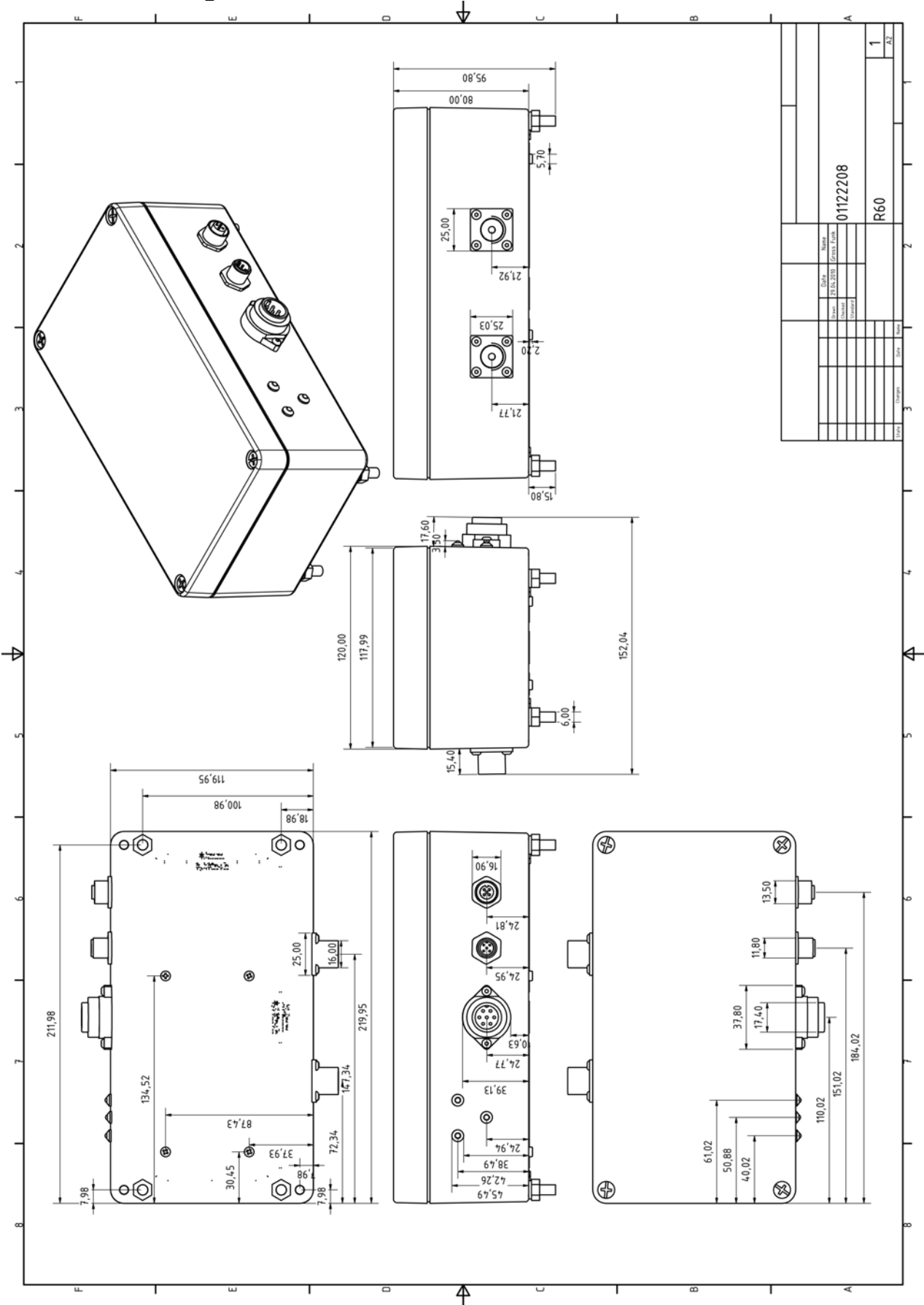
☺ = Standard configuration

● = optional equipment

— = not available

Dimensions (LxWxH mm) (if necessary plus attachment)	270x120x80
Weight (approx. depending on equipment)	2550 gr.
IP protection class	IP65
Power supply (pls. Indicate in your order)	12/24V DC
Automatic 12/24 v switch	☺
Operating temperature	-20 - +60°C
safety	SIL3 tested (EN61508)
Connection type	Plug connector
Housing type	Aluminium die casting
Emergency stop (redundant)	☺
Number of digital functions (relays/contactless)	—/3
Serial interfaces resp. Supported Bus system technology (already on board)	RS232, RS485, CAN, CANopen
Serial interfaces resp. Supported Bus system technology (optionally)	Profibus, Profinet, Modbus, MPI
Frequency switchover	●
Reflektomat	●
Frequency hopping	●
Transceiver (bi-direction, radio path)	●
Multiple transmitting operation	●
Multiple receiving operation (tandem operation)	●
Stand-By	—

Dimension drawing:



All dimensions in mm