

GF-T23



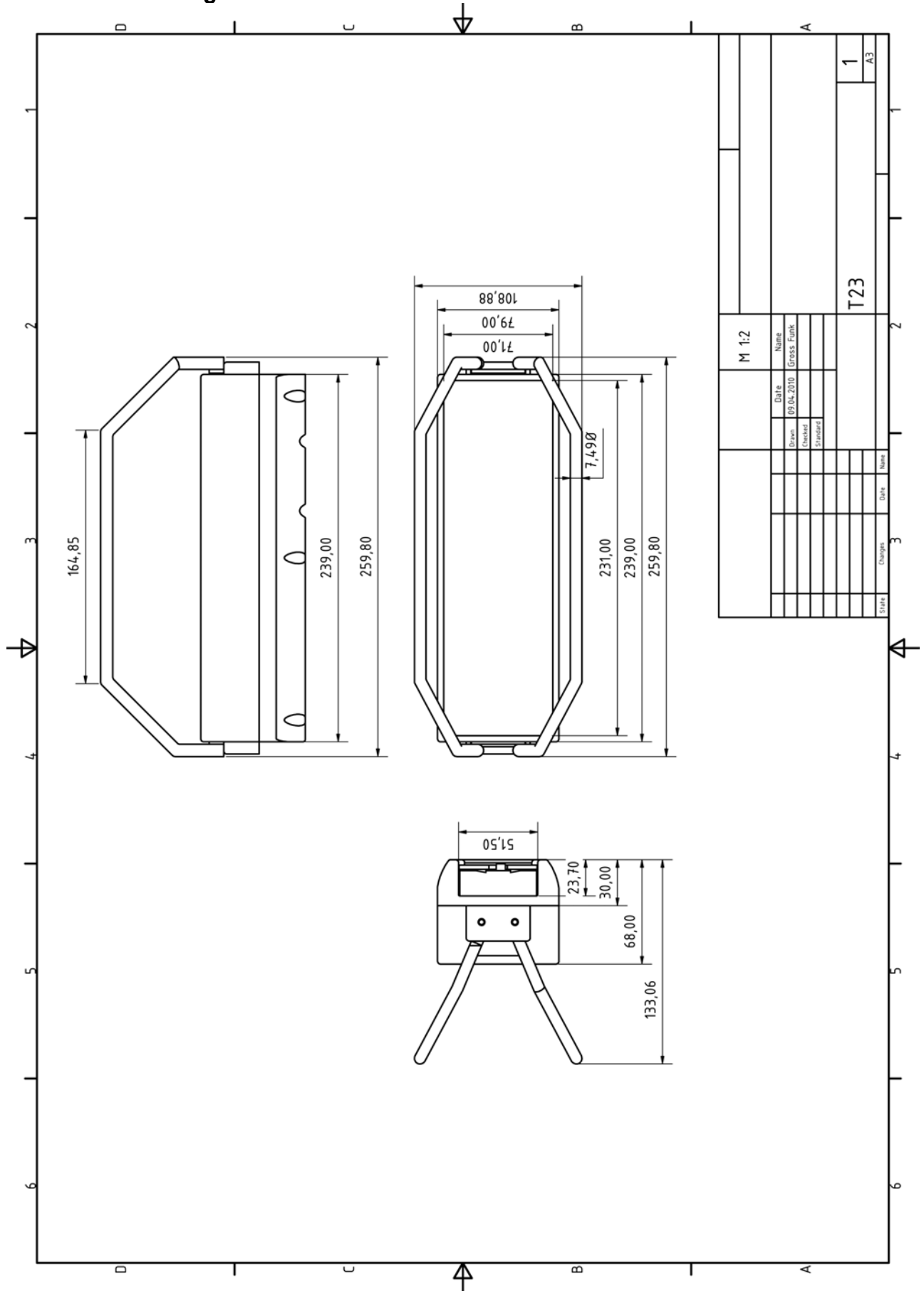
- can be universally used
- a robust stainless steel handle protects the switches from damage and unintended operation
- easy mounting and adaption
- robust and reliable
- compact and ergonomic
- layout of the operating elements according to your wishes
- inscription on many languages or with symbols
- can be easily combined with all GF sender types

Technical data:

● = optional equipment
 — = not available

Dimensions (LxWxH mm) (if necessary plus attachment)	250x125x125
Weight (approx. depending on equipment)	1100 gr.
IP protection class	IP65
Transmitter power 10mW ¹⁾	●
Transmitter power 100mW ²⁾	●
Frequency range 433/434 MHz	●
Frequency range 868 MHz	●
Operation temperature	-20 - +60°C
Battery	7,2V
Battery life (approx. depending on the options and the battery)	10h
Emergency stop switch	●
Joystick (proportional)	●
Masterswitch 1-u. 2-axial	●
Toggle switch (R-0,R-0-R,R-0-T,T-0-T)	●
Button (1-step)	●
Button (2-steps)	●
Proportional pushbutton	●
Potentiometer	●
Rotary switch	●
Membrane keyboard max. 20 keys	●
LED 3/5 and 8 mm in yellow, green and blue	●
LCD-Grafikdisplay (128x64)	—
LCD-Display (2x8 characters)	●
LCD-Display (2x16 characters)	●
LCD-Display (4x20 characters)	—
LED 7-Segment display (4-stellig)	●
Audible signal generator	●
Frequency	●
Frequency switchover	●
Transceiver (bi-direction radio path)	●
Multiple transmitting operation	●
Tandem operation	●
Stand-By Automatic	●
Illuminated panel display	—
Belt	●
Neck strap	●
Transmitter carrier bag	—
Mobile Charging adapter (12 or 24V-DC)	●
Comfort carrying system	—

Dimension drawing:



Alle dimensions in mm

Product data sheet:
GF2000i-CODEC

editor: A.Fey
date: 13.08.12

Document: TD_T23_E.doc
Side 2/2