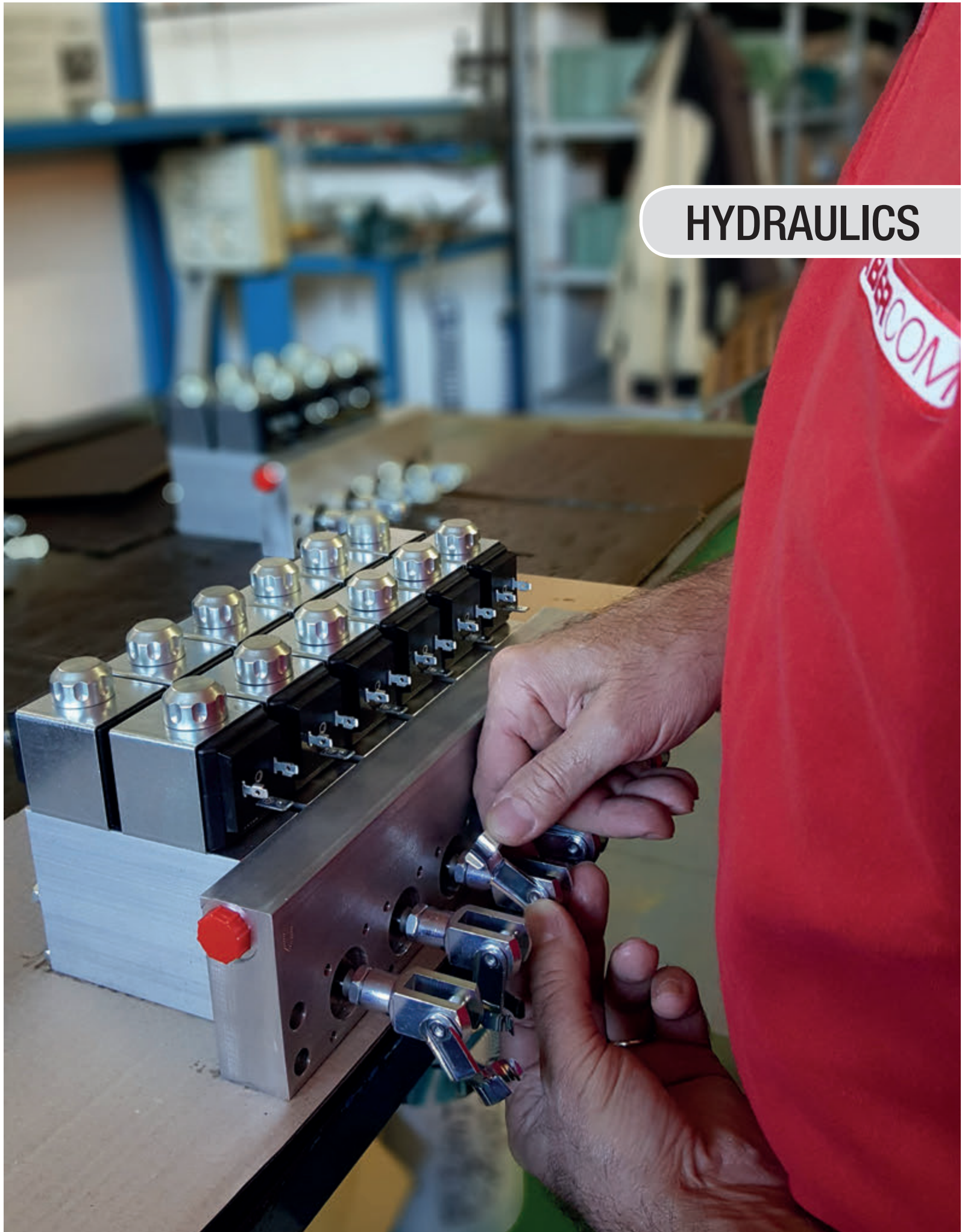
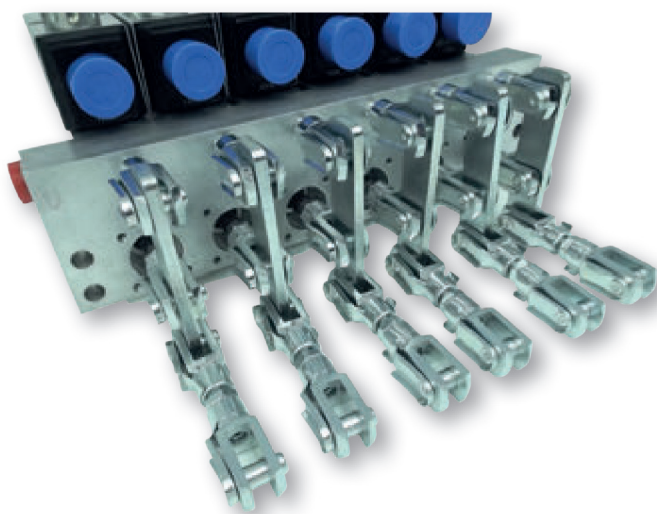


HYDRAULICS





Description

Our MOD10 hydraulic banks are electrohydraulic systems that, coupled with a manual hydraulic distributor, allow to remotely control the machine. The bank is made up of a manifold composed by a section (module) for each movement to activate. All the modules are identical and fixed to the manifold with four screws. MOD10 hydraulic blocks are mounted directly on the dual control rods, allowing their installation on any kind of machine. Each module works independently from the others.

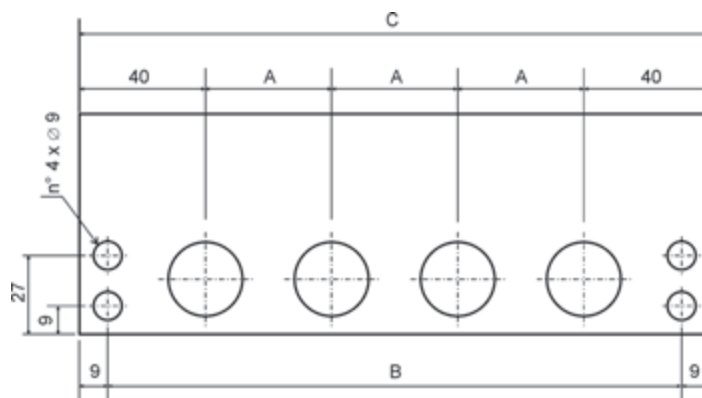
Stroke amplifier for MOD10 hydraulic blocks

The stroke of MOD10 hydraulic blocks is ± 13 mm. If a higher stroke is required, it is possible to use our stroke amplifiers to attain a stroke of ± 20 mm

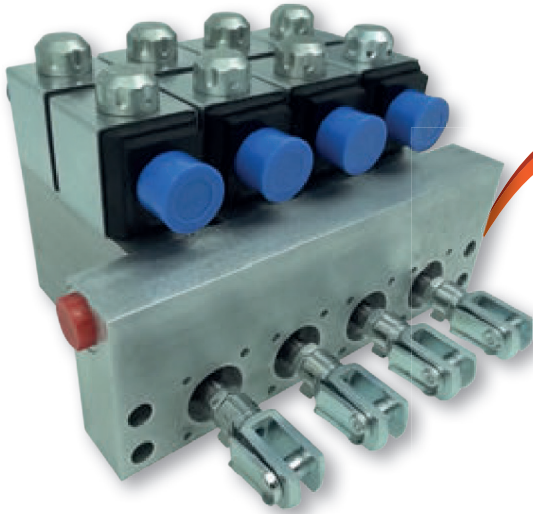
Technical specifications

| | |
|---------------------------|---|
| Supply voltage | 12Vdc or 24Vdc |
| PWM current range | 600 ÷ 1400 mA (12V) 300 ÷ 700 mA (24V) |
| Working frequency | 50 Hz |
| Feedback | Mechanical |
| Working temperature range | -20 ÷ +60 °C |
| Type of fluid | Mineral oil 10 ÷ 200 cSt |
| Max working pressure | 30 bar |
| Max thrust | 1300 N (at 30 bar) |
| Mechanical stroke | ± 13 mm |
| Weight | 1.6 kg approx. |
| Overall dimensions | 200 (W) x 130 (H) x 35 (D) mm |
| Max flow rate | 100 cc/minute |
| Connections | G1/4" BSPP |

| MANIFOLD TYPE | A (mm) | B (mm) | C (mm) |
|---------------|-----------|-----------|-----------|
| 4 functions | 40 | 182 | 200 |
| | 46 | 200 | 218 |
| | 50 | 212 | 230 |
| 6 functions | 40 | 262 | 280 |
| | 46 | 292 | 310 |
| | 50 | 312 | 330 |
| 8 functions | 40 | 342 | 360 |
| | 46 | 384 | 402 |



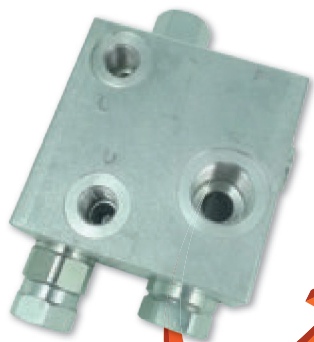
MOD10 proportional hydraulic block



G2B-G3 radio remote control



Low pressure oil filter



Counter-pressure block



Description

Installing this kit in retrofit on a manual crane allows you to command all the crane movements via the Scanreco radio remote control, including rotation, main boom, second boom, jib and so on.

Our MOD10 hydraulic block is directly installed on the dual control rods of the crane and, according to the commands coming from the Scanreco

radio remote, controls the existing hydraulic valve with the same precision and sensitivity of your hand.

The counter-pressure valve allows instead to fetch a part of oil from the main circuit of the machine, making it available on the secondary circuit at reduced pressure.